

2025 February BOM – Underground Railroad – Monkey Wrench



12 ½ Inch Unfinished

Ingredients:

Background : (1) 6" x 6" Square. – (2) 2" x 14" strip – *Outer Wrench*

(1) 4" x 4" – *Inner Wrench*

(1) 1 ¼" x 15" – *Inner Wrench*

(1) 3 ½" x 3 ½" square – *Inner Wrench*

Main Fabric: (1) 6" x 6" Square. – (2) 2" x 14" strip – *Outer Wrench*

2nd Main (Contrasting) fabric

(1) 4" x 4" Square – (1) 1 ¼" x 15" – *Inner Wrench*

(1) 1 ¼" x 15" – *Inner Wrench*

Instructions:

INNER WRENCH

Make half square triangles the easy way. Take your 4" x 4" Background fabric and your 4" x 4" Coordinating Fabric Right Sides Together (RST) – Sew ¼" all around the square. Cut on the diagonal twice, press open and trim to 2" squares - makes (4) four (HST) Half Square Triangles – **Inner Wrench**

Take your 1 ¼" x 15" Background and your 1 ¼" x 15" Contrasting fabric placing Right Sides Together (RST), sew the strips together (along the 15"). Press open and cut into 3 ½" segments. Making (4) four.

*Laying out your **Inner Wrench** for joining :*

First Row:

2" HST + 3 ½" segment + 2" HST

Middle Row:

3 ½" segment + 3 ½" square + another 3 ½" segment

Last Row:

2" HST + 3 1/2" segment + 2" HST

Sew together in rows connecting your Inner Wrench, press and trim if necessary – Should measure 6 1/2" square. This is your Inner Wrench, set aside.

Outer Wrench:

Make your HST (again the easy way): Take your 6" Background Square and a 6" Main Fabric, place RST; sew 1/4" around (just as you did with the Inner Wrench). Cut on the diagonal twice - press open and trim to 3 1/2" square, make (4) Half Square Triangles (HST).

Take your (2) strips of 2 1/2 x 15 Background and Main fabric (making 2 strip sets) with RST sew across one side joining the strips, press open. Now cut into 6 1/2" segments, should have 4.

See all examples. You are ready to put your Outer Wrench together.

Laying out your Outer Wrench for joining:

First Row:

3 1/2" HST + 6 1/2 segment + a 3 1/2" HST

Second Row:

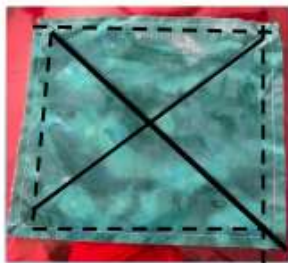
6 1/2" segment + 6 1/2" Inner Wrench block + 6 1/2" segment

Third Row:

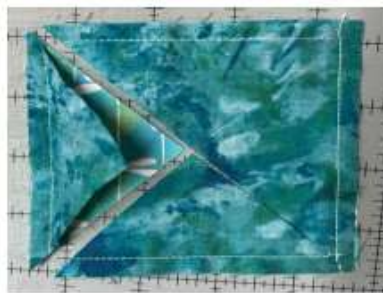
3 1/2" HST + 6 1/2" segment + 3 1/2" HST

Sew the rows in this order, Press and do any necessary trimming.

Examples:



Sew all around -



Cut on the diagonal making 4 HST press & trim



Bkgd and Main sewn together



Cut into segments



Forming 4 Patch



Makes a 4 patch



6 1/2" Center



Center + outer makes block